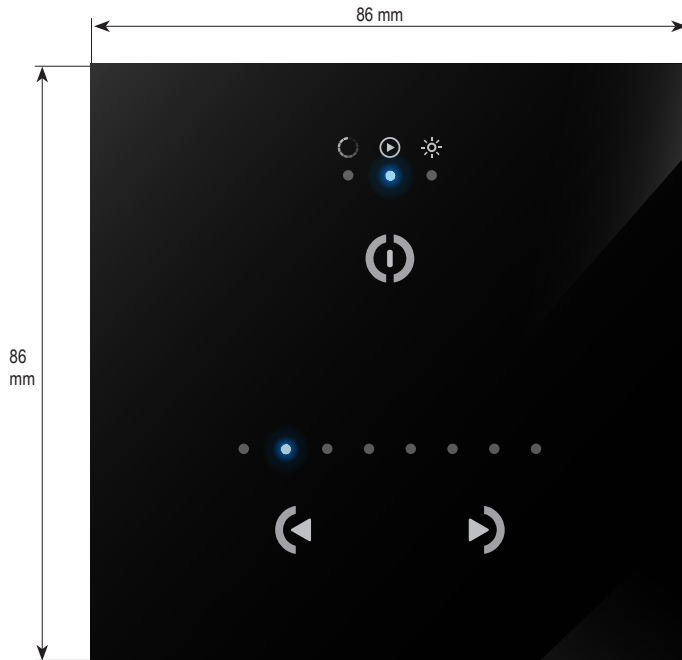
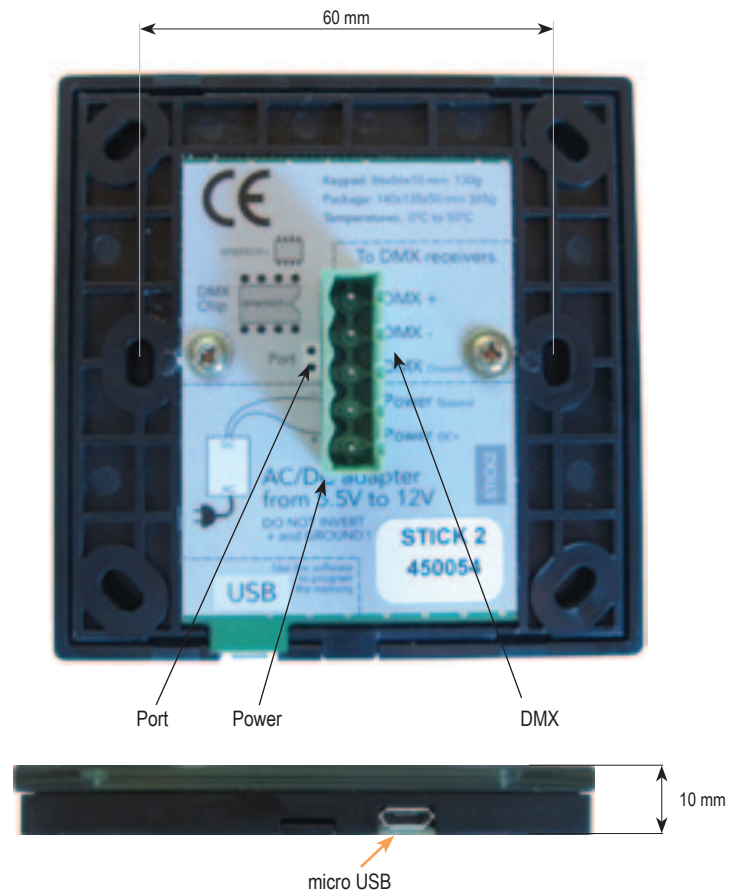


- DMX Stand Alone Controller (128 channels) with a glass face
- 3 touch sensitive buttons (on/off/mode, previous, next)
- Up to 24 dynamic or static scenes (8 first visualized by a led)
- Live setting of the intensity and color of a scene
- Programmable through the included USB cable and control software
- Compatible with any DMX fixture or DMX LED driver
- Ready to use (pre-loaded with 8 scenes and 42 RGB fixtures)
- Latest ARM CPU technology
- Customized design for OEM, wall mountable
- One dry contact trigger port on PCB



● **PREVIOUS**    ● **NEXT**

- **ON/OFF** : Short touch - *Easy switch on and off*
- **CHANGE MODE** : Touch and hold  
*To switch between color, scene and dimmer mode*

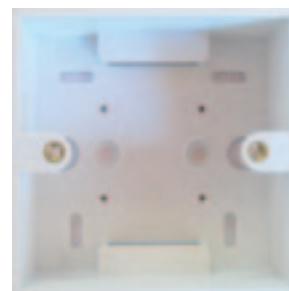
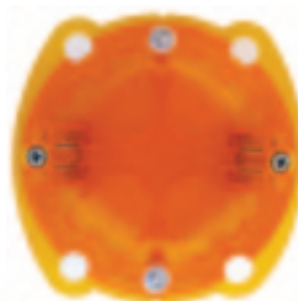


SPECIFICATIONS		AVAILABLE MEMORY <small>Depending on the number of scenes used</small>	
<b>Package</b>	Controller, cdrom, usb cable, connector block	<b>CHANNELS</b>	<b>STEPS</b> <small>Using 8 scenes</small>
<b>OS requirement</b>	Mac OSx 10.6/10.7/10.8 - Windows XP/VISTA/SEVEN/8 32/64 bits and USB 2.0	<b>8</b>	1691
<b>Software</b>	Easy Stand Alone, ESA2 (PC & Mac)	<b>16</b>	1011
<b>Versions</b>	Black glass design, White glass design	<b>32</b>	557
<b>Connections</b>	Power (2pins) DMX (3pins) Port (2 pins) Micro-usb	<b>48</b>	383
<b>Power</b>	from 5.5V to 12V DC(AC/DC adapter in option). Max 5.5v with USB	<b>64</b>	291
<b>Certifications</b>	EC, EMC, ROHS, ETL, UL (some are in process)	<b>80</b>	233
<b>Keypad</b>	86x86x10 mm 110g	<b>96</b>	195
<b>Package</b>	140x135x50 mm 365g	<b>112</b>	166
<b>Use</b>	Environnement IP20 Temperature 0°C to 50°C	<b>128</b>	145

# EASY INSTALLATION

## 1. Mount an electrical box inside the wall

The S.T.I.C.K. controller can be installed in a standard 60mm electrical backbox.  
You can insert the AC/DC adapter inside or outside the backbox.



## 2. Connect the wires

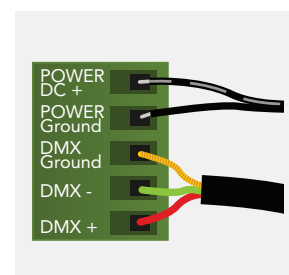
Use the green connector block

### POWER+DMX

WITH THE CONNECTOR BLOCK

**DMX:** Connect the DMX cable to the lighting receivers (Leds, Dimmers, Fixtures..) (for XLR: 1=ground 2=dmx- 3=dmx+)

**POWER:** Connect the AC/DC adapter. Make sure not to invert the + and the ground.



## 3. Mount the interface on the wall

First, plug the green connector block

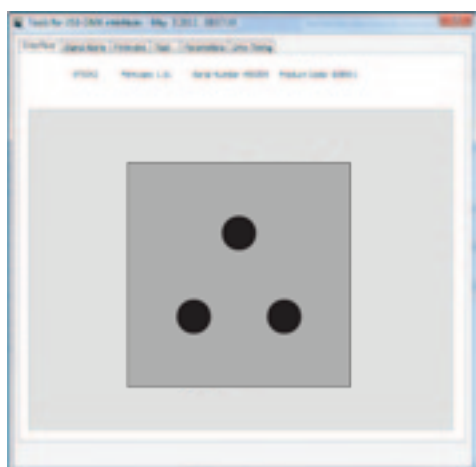
Secondly, mount the back side of the interface on the wall with 2 or more screws

Then, close the unit by clipping the front panel onto the back plate

Wait 30 seconds for the touch sensitivity to adjust

# SOFTWARE

**TOOLS.EXE** to set parameters



**ESA2 (PC & Mac)** to make lighting programs

