

Specifier's Reference
Project
Type
Model No.
Comments or Special Instructions

ILL-SF-P5CT SUBMERSION FITTING

APPLICATION

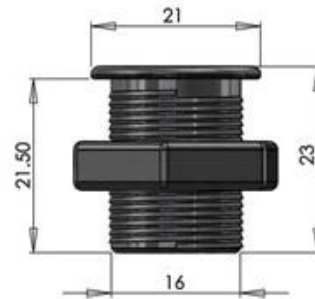
A small round wet area paver, manufactured from stainless steel with a clear glass focusing lens.

This fitting has a threaded body and is supplied with a backnut to allow fixing through a thin substrate.

The P5CT is popular in spa pools and baths where the nut can be used to fix it through the typically thin surface of either.

SPECIFICATION

Glass:	Ø Clear domed lens
Material:	Stainless steel
Colours available:	Natural
Beam angle:	60°
Flange size:	Ø21mm
Weight:	37.5g
Ferrule size:	M10 or 8mm smooth
Min. fibre size:	Ø2mm
Max. fibre size:	Ø8mm



Ordering Information

ILL-SF-P5CT

